

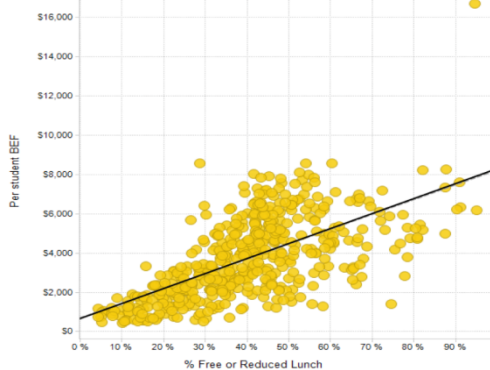


Some schools get more state funding than expected. Some schools get less.

What determines which schools get less?

PA appropriately provides more funding per student to poorer districts than to richer ones in its 501 districts. Educating poorer students costs more, and poor districts can generate less local school funds.

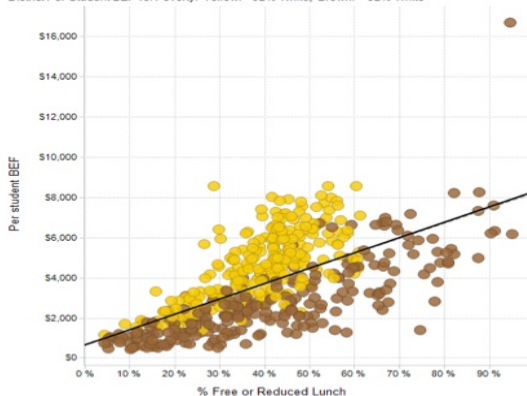
District Per-Student BEF vs. Poverty



- The diagonal black line represents how much funding a district should get, based solely on poverty.

Districts above the line are receiving more than expected per student for their level of poverty. Districts below the line are receiving less than expected.

District Per-Student BEF vs. Poverty. Yellow: >92% White; Brown: < 92% White



Yellow dots represent predominantly white districts. They receive more funding than expected based on poverty level.

Most districts below the line are brown. They represent districts with more minority students.

These districts receive less funding than expected.